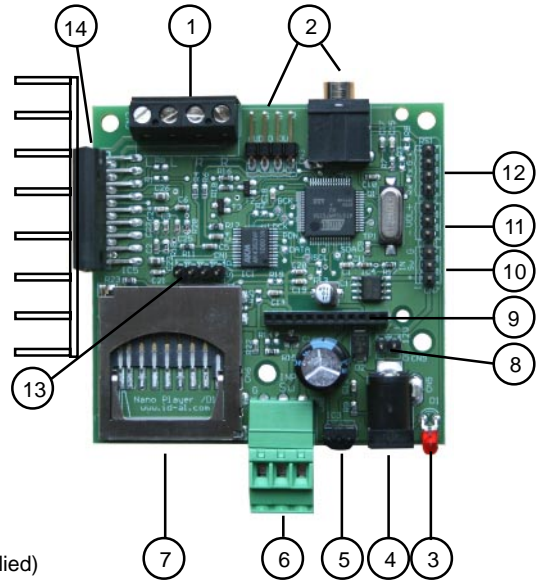


# NanoPlayer - Quick start guide

## 1 - Connections

**Memory card :**  
 We recommend the use of a quality SD card of a minimum size of 64Mo.  
 A brand new card is usually preformatted in «FAT». It is also possible to use format FAT32 for cards over 512Mo capacity.  
 The SD card must only be inserted or removed whilst the NanoPlayer is NOT POWERED ON.

- 1 - Amplified audio output
- 2 - Audio output on line level
- 3 - Luminous indicator
- 4 - Power supply socket
- 5 - Infrared sensor
- 6 - Input on dry contact
- 7 - SD card connector
- 8 - Power supply (internal repeat)
- 9 - Extension for optional GPS module
- 10 - Input (repeat on pin connector)
- 11 - Volume setting
- 12 - Option (Serial link)
- 13 - Option (S/PDIF)
- 14 - Amplifier + heat dissipator to fit (not supplied)



## 2 - Cooling:

**The amplifier heats up and it is important to add a cooling device.**

The size of the device must be proportional to the desired power; the wall of the case, a piece of metal or a purchased cooling device can be used.

## 3 - Operating the NanoPlayer

Files are organized into two directories ; directory names are composed of 3 digits:  
 Directory 0 contains the files to be read on powering on and played back in loop  
 Directory 1 contains the files to be read when the input contact is triggered



### Naming of the directories - composed of 3 characters

- **1st digit defines the directory number - Value 0 or 1**

0xx : Directory 0 is the default directory, automatically read on powering on the player  
 1xx : Directory 1 is the directory read when the input contact is triggered

- **2nd digit is a letter which defines the playback mode of the directory**

Directory 0 «0xx» has 2 playback modes - Directory 1 «1xx» has the same 2 + 2 additional playback modes

xRx : R for random mode (RND) - All the files of the folder are read randomly  
 xSx : S for sort mode, i.e. playback in a defined order (SORT) - All the files of the folder are read in a sequenced order

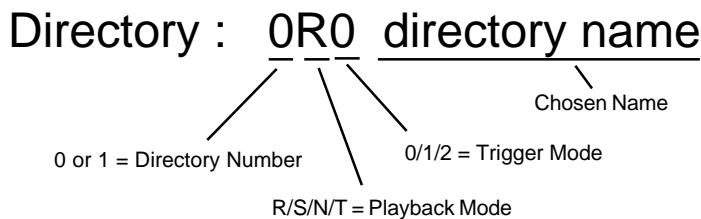
**Two additional modes available for the input contact directory only :**

xNx : N Read one file only - On each input contact, the next file (and only this one) is read in random mode  
 xTx : T Read one file only - On each input contact, the next file (and only this one) is read in sequential mode

- **3rd digit is a figure which defines the mode for triggering the files**

This parameter only applies in the trigger directory «1xx». This last digit is ignored the default directory «0xx».

xx0 : The trigger directory is launched by an impulse in **Non re-activation mode**, a new impulse has no effect  
 xx1 : The trigger directory is launched by an impulse in **Re-activation mode**, a new impulse stops current playback to broadcast a new file.  
 xx2 : The trigger directory is read as long as the input contact is activated. Playback stops when the contact is released



### Naming of the audio files included in the directories

- In random mode, naming of files is free. Only the extension is meaningful: name.mp3 for MP3 files or name.wav for WAVE files
- In sequential mode, i.e. in ordered playback mode, file names must include 3 figures to define the sequence number of the file. The 3 figures may or may not be followed by a chosen name  
 Example : «001 my song.mp3» or «001.mp3» or «001.wav» or «001 my song.wav»